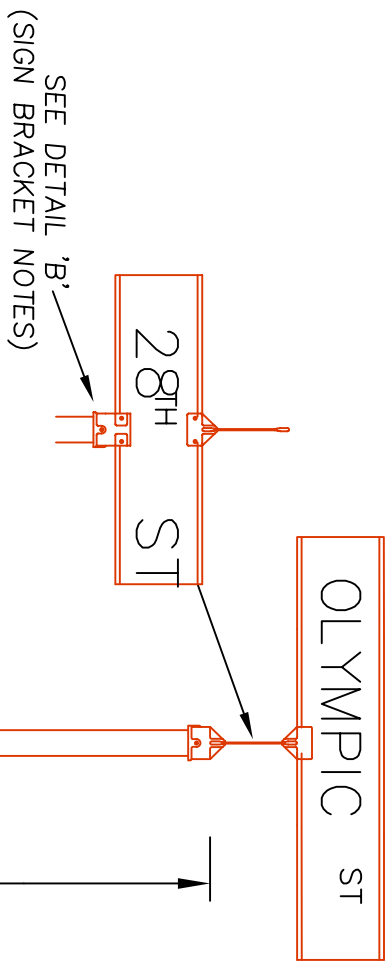
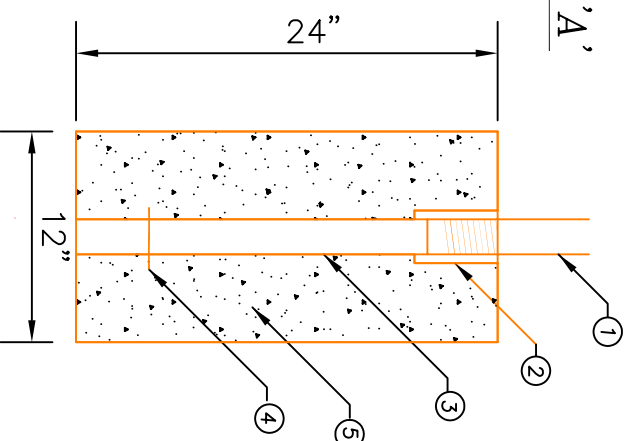


SETBACK SIDEWALK SIGN INSTALLATION

DETAIL 'A'

FOOTING INSTALLATION NOTES

- ① INSTALL 2" RIGID GALVANIZED STEEL PIPE.
- ② INSTALL 2" GALVANIZED THREADED STEEL PIPE COUPLING WITH TOP SET AT FINISHED GRADE.
- ③ INSTALL 2" RIGID GALVANIZED STEEL PIPE TACK WELDED TO COUPLING TO PREVENT TURNING.
- ④ INSTALL 1/4" X 5" STEEL PIN THROUGH STEEL PIPE
- ⑤ INSTALL SIGN BASE ASSEMBLY IN CLASS 3300 PORTLAND CONCRETE USING 2" MIN. GUIDE ROD TO INSURE SIGN POST WILL BE VERTICAL.



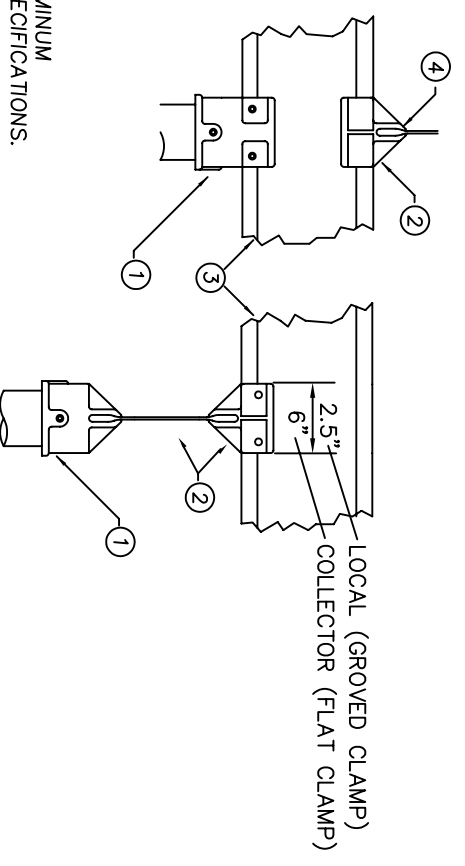
CURBSIDE SIDEWALK INSTALLATION

NOTE: BEFORE INSTALLING A SIGN BASE CONTACT CITY TRANSPORTATION DIVISION TO REQUEST A MARKED SIGN LOCATION. CALL - 726-3753

DETAIL 'B'

SIGN MOUNTING BRACKET NOTES

- ① INSTALL STREET SIGN CAP MOUNT FOR STREET NAME SIGN.
- ② INSTALL 90° TOP MOUNT FOR STREET NAME SIGN.
- ③ INSTALL EXTRUDED or FLAT ALUMINUM STREET NAME SIGN PER CITY SPECIFICATIONS.
- ④ MOUNTING BRACKETS FOR LOCAL SIGNS SHALL HAVE A GROVED CLAMP TO FIT EXTRUDED SIGN. MOUNTING BRACKETS FOR COLLECTOR SIGNS SHALL HAVE A FLAT CLAMP TO FIT FLAT SIGNS



NOTE: DRAWING NOT TO SCALE
 ALL BOLTS, BOLTS, NUTS, AND WASHERS SHALL BE GALV. STEEL UNLESS NOTED OTHERWISE. ALL SET SCREWS SHALL BE MIN DIA. 1/4" STAINLESS STEEL WITH SQUARE OR HEX HEADS. ALL SPANWIRE HANGERS AND PLUMBERZERS SHALL BE CAST BRONZE.

NO	REVISION	DATE	BY	APPR.
1	STD. DWG. 5-18	4/94	DRB	
2	SIGN STANDARDS	12/96	DRB	
3	STD. DWG. UPDATE	7/01	D.D.	B.B.

BY DATE
 DRAWN: M. ABARCA 5/93
 DESIGNED:
 CHECKED:
 APPROVED:
 FILENAME: TSD5_18

CITY OF SPRINGFIELD
 DEPT. OF PUBLIC WORKS
 TRANSPORTATION DIVISION
 225 FIFTH STREET
 SPRINGFIELD, OR. 97477
 (541) 726-3753



ROADSIDE SIGN INSTALLATION DETAIL

STANDARD DRAWING
 5-18