

Welcome to the first Gateway/Beltline Intersection Refinement Project meeting!

Tonight, you can:

- Review information about the project's history and timeline.
- Review the alternative selected in the environmental assessment that will serve as the starting point for the refinement effort.
- Identify questions and concerns about the environmental assessment alternative that you would like to see addressed during the refinement effort.
- Talk to staff and ask questions.

You can provide comments by:

- Writing comments on sticky notes and attaching them to maps
- Completing the comment form

History: 2000 to present

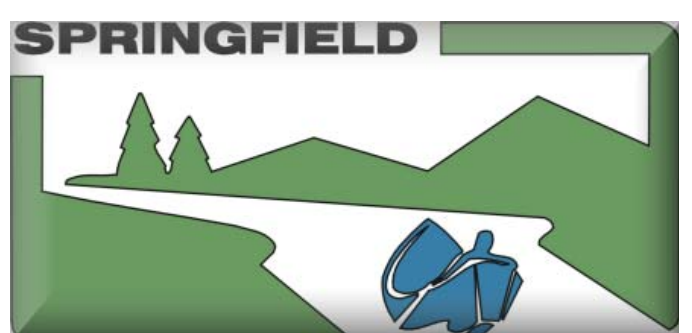
The Gateway/Beltline Intersection Refinement Project will develop detailed designs for the alternative selected through the 2003 I-5/Beltline Interchange Environmental Assessment.

2000-2003	<ul style="list-style-type: none"> • Work begins on the I-5/Beltline Interchange Environmental Assessment • Alternatives are identified and evaluated with ongoing input from the Beltline Stakeholder Work Group and the broader community
2003	<ul style="list-style-type: none"> • Preferred Interchange/Intersection option is selected after a public hearing and is documented in an environmental assessment
2006	<ul style="list-style-type: none"> • Improvements to Beltline Road east of Hutton Street identified in the environmental assessment are completed • ODOT begins construction on the I-5/Beltline interchange improvement • The City of Springfield hires a consultant team to assist in the refinement of the environmental assessment alternative
2007	<ul style="list-style-type: none"> • The Gateway/Beltline Intersection Refinement Project begins







Public Involvement Opportunities

The City of Springfield welcomes your involvement at each step of the project. The following are key involvement opportunities:

- **OPEN HOUSES**—The City of Springfield will host one more project open house in August 2007 to share project progress and gather input.
- **STAKEHOLDER WORK GROUP**—A Stakeholder Work Group will meet three times between March and September 2007 to provide feedback to the project team on specific issues such as streetscape, access, and intersection designs. Membership in the Stakeholder Work Group is open to all affected property and business owners and other stakeholders.
- **STAKEHOLDER SUBGROUPS**—Property and business owners directly affected by the project will be invited to participate in subgroup meetings to discuss specific design and access issues.
- **PUBLIC HEARING**—The Springfield City Council will host a public hearing in spring 2008 to gather final input on project decisions.



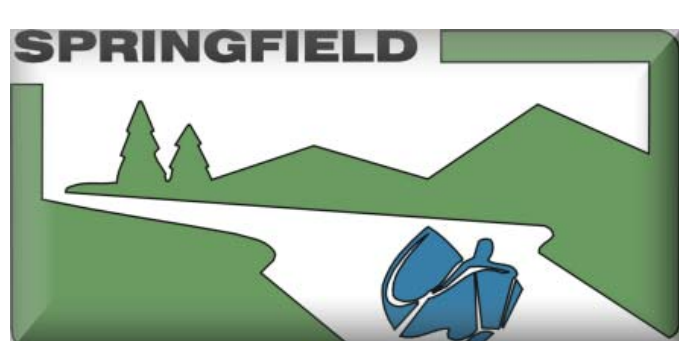
Project Schedule and Public Involvement Opportunities

WINTER 2007	SPRING 2007	SUMMER 2007	FALL 2007– SPRING 2008
<ul style="list-style-type: none"> Review environmental assessment alternative Identify areas that need refinement <div style="text-align: center;">   </div>	<ul style="list-style-type: none"> Develop intersection refinements Develop access and circulation plans <div style="text-align: center;">  </div>	<ul style="list-style-type: none"> Refine intersection designs Identify streetscape elements <div style="text-align: center;">   </div>	<ul style="list-style-type: none"> Agency approvals Public hearing <div style="text-align: center;">  </div>

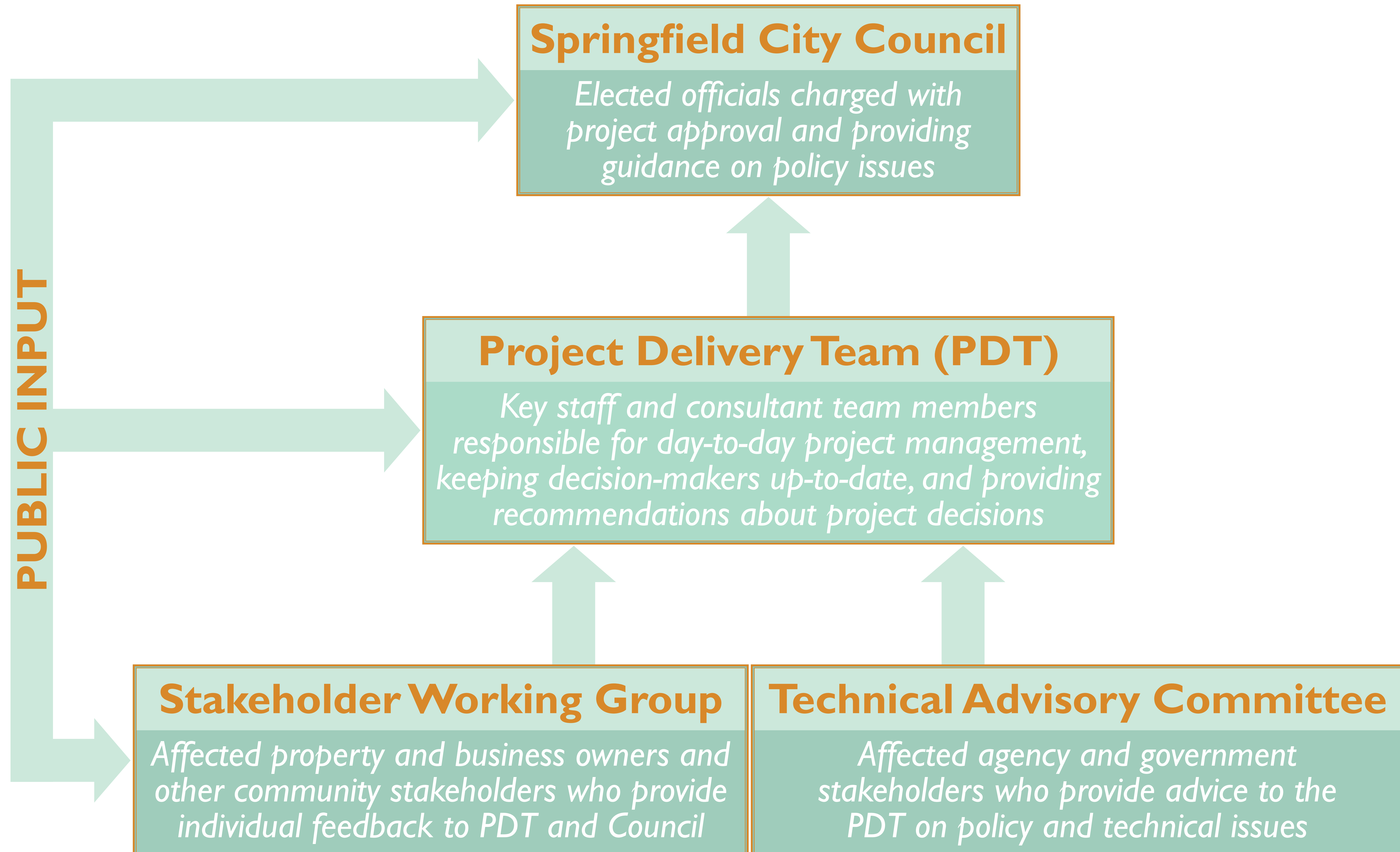
Alternative Selected in Environmental Assessment

After three years of work with community members and other stakeholders to develop and evaluate a range of alternatives, the Oregon Department of Transportation selected a concept for improvements to the I-5/Beltline interchange and local roads in the area. The improvements called for in the 2003 environmental assessment include:



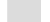

- A new couplet, or two one-way streets, on Gateway Street and Hutton Street/Kruse Way south of Beltline Road. Under this plan:
 - Southbound traffic would use Gateway Street
 - Northbound traffic would use a realigned Hutton Street/Kruse Way between Kruse Way and Beltline Road
- Three through lanes eastbound and westbound on Beltline Road from I-5 to Hutton Street with left- and right-turn lanes, planted median, and managed access
- Improvements to Gateway Street between International Way and Beltline Road:
 - Two through lanes, planting strips, and sidewalks and bicycle lanes in both directions with a raised center median
 - Left- and right-turn lanes to Beltline Road
- New or upgraded intersections at:
 - Gateway Street and International Way
 - Gateway Street and Game Farm Road East
 - Gateway Street and Beltline Road
 - Gateway Street and Gateway Loop
 - Beltline Road and Hutton Street



Decision-making Structure



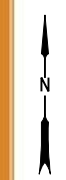
LEGEND

-  BRT Route
-  Decommissioned
-  Under Construction
-  New/Reconstructed Roads



GATEWAY/BELTLINE INTERSECTION REFINEMENT PROJECT

City of Springfield
 Project Area
 Not To Scale



- LEGEND**
- PROPOSED R/W
 - - - CONCRETE CURB
 - · - · - LANE LINE
 - RAISED MEDIAN/ISLAND
 - PLANTER
 - SIGNAL

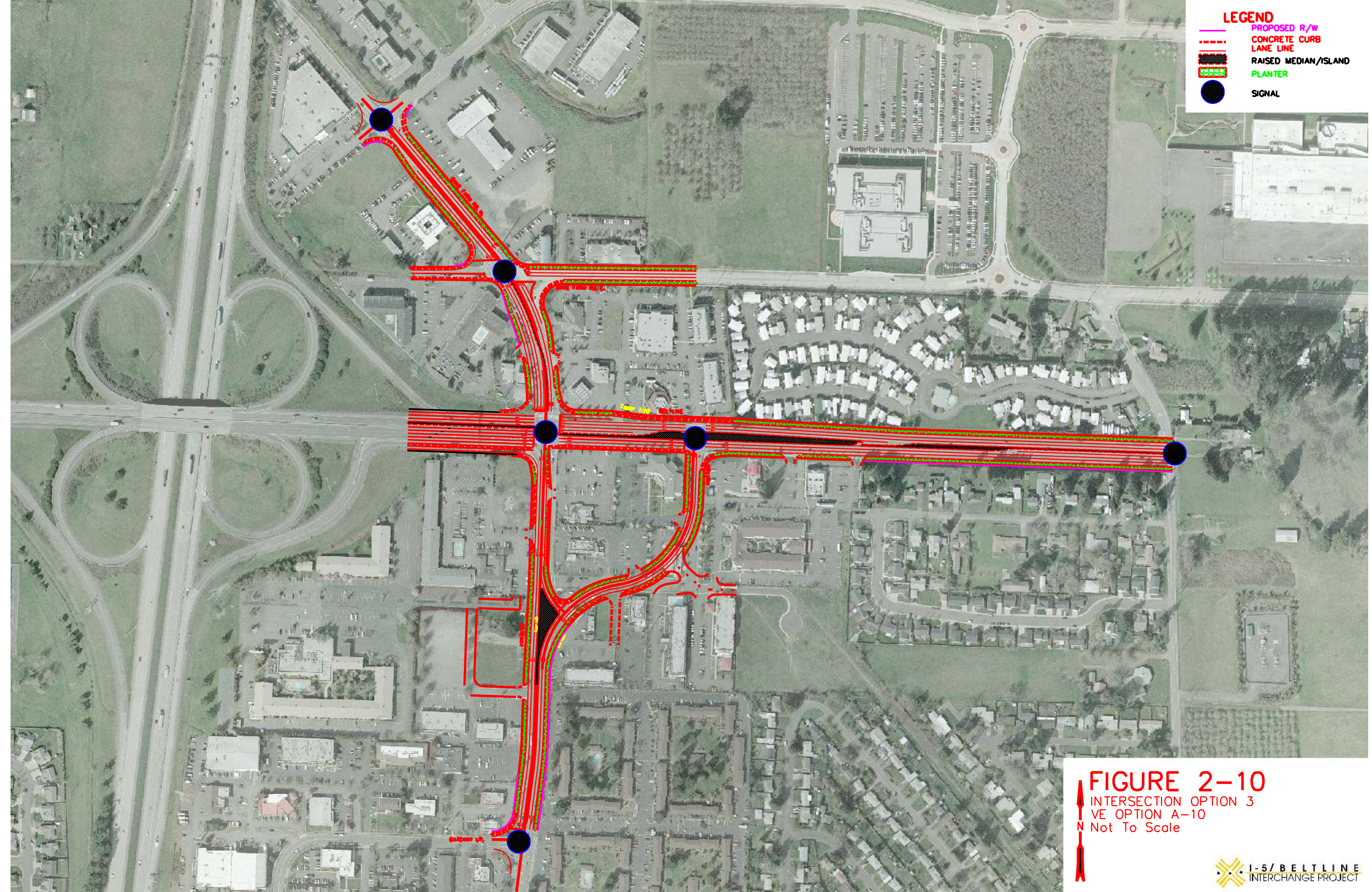


FIGURE 2-10
 INTERSECTION OPTION 3
 VE OPTION A-10
 N Not To Scale

LEGEND

- CONCRETE CURB
- LANE LINE
- RAISED MEDIAN/ISLAND
- PLANTER
- INTERSECTION IMPROVEMENTS

NUMBER OF LANES, TURN LANES AND BUSINESS ACCESS

NUMBER OF EASTBOUND TO NORTHBOUND TURNS

NUMBER OF WESTBOUND THROUGH TRIPS

NORTHBOUND BUS RAPID TRANSIT

ACCESS TO BUSINESSES

